

ASYMPTOTICALLY SHARP DIMENSION ESTIMATES FOR k -POROUS SETS

ESA JÄRVENPÄÄ, MAARIT JÄRVENPÄÄ, ANTTI KÄENMÄKI, AND
VILLE SUOMALA

ABSTRACT. In \mathbb{R}^n , we establish an asymptotically sharp upper bound for the upper Minkowski dimension of k -porous sets having holes of certain size near every point in k orthogonal directions at all small scales. This bound tends to $n - k$ as k -porosity tends to its maximum value.

1. INTRODUCTION AND NOTATION

The well-known results on dimensional properties of porous sets $A \subset \mathbb{R}^n$ having holes of certain size at all small scales deal with the Hausdorff dimension, \dim_H , and the following definition of porosity:

$$\text{por}(A) = \inf_{x \in A} \text{por}(A, x), \quad (1.1)$$

where

$$\text{por}(A, x) = \liminf_{r \downarrow 0} \text{por}(A, x, r) \quad (1.2)$$

and

$$\text{por}(A, x, r) = \sup\{\rho : \text{there is } z \in \mathbb{R}^n \text{ such that } B(z, \rho r) \subset B(x, r) \setminus A\}. \quad (1.3)$$

Here $B(x, r)$ is a closed ball with centre at x and radius $r > 0$. Mattila [8] proved that if $\text{por}(A)$ is close to the maximum value $\frac{1}{2}$, then $\dim_H(A)$ cannot be much bigger than $n - 1$. Salli [12], in turn, verified the corresponding fact for both the upper Minkowski dimension of uniformly porous sets and the packing dimension of porous sets, and in addition to this, confirmed the correct asymptotic behaviour for the dimension estimates when porosity tends to $\frac{1}{2}$. For other related results on porous sets and measures, see [1], [2], [4], [5], [7], [10], and [11].

Clearly, $n - 1$ is the best possible upper bound for the dimension of a set having maximum porosity; any hyperplane serves as an example. Whilst a hyperplane

Date: October 2004.

2000 Mathematics Subject Classification. 28A75, 28A80.

Key words and phrases. (uniform) k -porosity, upper Minkowski dimension, packing dimension.

EJ and MJ acknowledge the support of the Academy of Finland (projects #208637 and #205806), and VS is indebted to the Finnish Graduate School of Mathematical Analysis and to the Yrjö, Vilho, and Kalle Väisälä Fund.

has holes of maximum size in one direction which is perpendicular to the plane, a k -dimensional plane has $n - k$ orthogonal directions with maximum holes. Intuitively, it seems natural to expect that the more such directions the set has, the smaller its dimension should be. For examples of Cantor sets, see [12] and [6]. This leads to the following generalisations of (1.1)–(1.3) introduced in [6]:

Definition 1.1. Let k and n be integers with $1 \leq k \leq n$. For all $A \subset \mathbb{R}^n$, $x \in \mathbb{R}^n$, and $r > 0$, we set

$$\text{por}_k(A, x, r) = \sup\{\varrho : \text{there are } z_1, \dots, z_k \in \mathbb{R}^n \text{ such that for every } i \\ B(z_i, \varrho r) \subset B(x, r) \setminus A \text{ and } (z_i - x) \cdot (z_j - x) = 0 \text{ if } j \neq i\}.$$

Here \cdot is the inner product. The k -porosity of A at a point x is defined to be

$$\text{por}_k(A, x) = \liminf_{r \downarrow 0} \text{por}_k(A, x, r),$$

and the k -porosity of A is given by

$$\text{por}_k(A) = \inf_{x \in A} \text{por}_k(A, x).$$

Note that $\text{por}_1(A) = \text{por}(A)$ for all $A \subset \mathbb{R}^n$. As verified by Käenmäki and Suomala in [6] as a consequence of a conical density theorem, Definition 1.1 gives necessary tools for extending Mattila's result to the setting described heuristically above. Indeed, it turns out that the Hausdorff dimension of any set having k -porosity close to $\frac{1}{2}$ cannot be much bigger than $n - k$, see [6, Theorem 3.2]. In this paper we generalise this result for the upper Minkowski and packing dimensions using completely different methods. Our main results, Theorem 2.5 and Corollary 2.6, may be viewed as extensions of Salli's results to k -porosity as well. However, in the case $k = 1$ the proof we give is somewhat simpler than that of Salli's. The dimension estimates we establish are asymptotically sharp, see Remark 2.7.

We complete this section by introducing the notation we use. For integers $0 \leq m \leq n$, let $G(n, m)$ be the Grassmann manifold of all m -dimensional linear subspaces of \mathbb{R}^n . When $V \in G(n, m)$, the orthogonal projection onto V is denoted by proj_V . If $0 < \alpha < 1$, $V \in G(n, m)$, and $x \in \mathbb{R}^n$, we define

$$X(x, V, \alpha) = \{y \in \mathbb{R}^n : |\text{proj}_{V^\perp}(y - x)| \leq \alpha|y - x|\},$$

where $V^\perp \in G(n, n - m)$ is the orthogonal complement of V . Furthermore, given $V \in G(n, m)$ and $0 < \alpha < 1$, we say that a set $A \subset \mathbb{R}^n$ is (V, α) -planar if

$$A \subset X(x, V, \alpha)$$

for all $x \in A$. The set A is called (m, α) -planar if it is (V, α) -planar for some $V \in G(n, m)$.

Let S^{n-1} be the unit sphere in \mathbb{R}^n . For the half-spaces we use the notation

$$H(x, \theta) = \{y \in \mathbb{R}^n : (y - x) \cdot \theta > 0\},$$

where $\theta \in S^{n-1}$ and $x \in \mathbb{R}^n$. Moreover, ∂A is the boundary of a set $A \subset \mathbb{R}^n$ and $A(r) = \{x \in \mathbb{R}^n : \text{dist}(x, A) \leq r\}$ for all $r > 0$.

There are many equivalent ways to define the Minkowski dimension of a given bounded set $A \subset \mathbb{R}^n$, see [9, §5.3]. For us it is convenient to use the following: Letting $0 < \delta < 1$ and $i \in \mathbb{N}$, we denote by $N(A, \delta, i)$ the minimum number of balls of radius δ^i that are needed to cover A . The upper Minkowski dimension of A is defined by setting

$$\dim_M(A) = \limsup_{i \rightarrow \infty} \frac{\log N(A, \delta, i)}{\log(\delta^{-i})}.$$

It is easy to see that this definition does not depend on the choice of δ . The Hausdorff and packing dimensions, see [9, §4.8 and §5.9], are denoted by \dim_H and \dim_p , respectively.

2. DIMENSION ESTIMATES FOR k -POROUS SETS

For the purpose of verifying our main results, Theorem 2.5 and Corollary 2.6, we need three technical lemmas. The first one, Lemma 2.1, dealing with k -porous sets, follows easily from the definitions. The remaining ones, Lemmas 2.2 and 2.3, are related to (m, α) -planar sets.

For $\sqrt{2} - 1 < \varrho < \frac{1}{2}$, we define

$$t(\varrho) = \frac{1}{\sqrt{1 - 2\varrho}} \quad (2.1)$$

and

$$\delta(\varrho) = \frac{1 - \varrho - \sqrt{\varrho^2 + 2\varrho - 1}}{\sqrt{1 - 2\varrho}}. \quad (2.2)$$

Notice that

$$0 < \delta(\varrho) < 4\sqrt{1 - 2\varrho} \quad (2.3)$$

and, in particular, $\delta(\varrho) \rightarrow 0$ as $\varrho \rightarrow \frac{1}{2}$.

The first lemma is a quantitative version of the following simple fact: Assuming that $\text{por}_k(A, x, R) > \varrho$, there exists z such that $B(z, \varrho R) \subset B(x, R) \setminus A$. If R is much larger than r , then $\partial B(z, \varrho R) \cap B(x, r)$ is nearly like a piece of a hyperplane. Therefore one will not lose much if $A \cap B(x, r) \setminus B(z, \varrho R)$ is replaced by $A \cap B(x, r) \setminus H$, where H is a suitable half-space. The advantage of this replacement is that $B(x, r) \setminus H$ is convex, whilst $B(x, r) \setminus B(z, \varrho R)$ is not.

Lemma 2.1. *Given $\sqrt{2} - 1 < \varrho < \frac{1}{2}$ and $r_0 > 0$, assume that $A \subset \mathbb{R}^n$ is such that $\text{por}_k(A, x, r) > \varrho$ for all $x \in A$ and $0 < r < r_0$. Then, taking $t = t(\varrho)$ as in (2.1), for any $0 < r < \frac{r_0}{2t}$, $x \in A$, and $y \in A \cap B(x, r)$, there are orthogonal vectors $\theta_1, \dots, \theta_k \in S^{n-1}$ such that for all $i \in \{1, \dots, k\}$*

$$A \cap B(x, r) \cap H(y + 2\delta r \theta_i, \theta_i) = \emptyset, \quad (2.4)$$

where $\delta = \delta(\varrho)$ is as in (2.2).

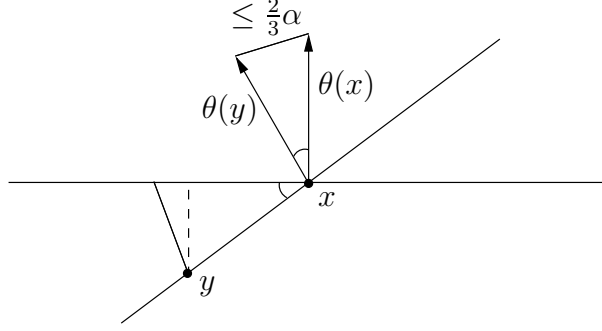


Figure 1. Illustration for the proof of Lemma 2.2: The extreme positions of x and y .

Proof. The claim follows directly from Definition 1.1 and [6, Lemma 3.1]. \square

Lemma 2.2. *For all $0 < \alpha < 1$ there is a positive integer $M = M(n, \alpha)$ such that if $C \subset \mathbb{R}^n$ is convex, then ∂C can be decomposed into M parts all of which are $(n-1, \alpha)$ -planar.*

Proof. Let $C \subset \mathbb{R}^n$ be convex. For any $x \in \partial C$, we may choose $\theta(x) \in S^{n-1}$ such that $H(x, \theta(x)) \cap C = \emptyset$. This defines a mapping $\theta: \partial C \rightarrow S^{n-1}$. Let $\tilde{\theta} \in S^{n-1}$ and $B = B(\tilde{\theta}, \frac{\alpha}{3}) \cap S^{n-1}$. Now, if $x, y \in \theta^{-1}(B)$, then $|\theta(y) - \theta(x)| \leq \frac{2}{3}\alpha$. Since $x \notin H(y, \theta(y))$ and $y \notin H(x, \theta(x))$, this yields to

$$\text{dist}(y - x, \theta(x)^\perp) = |(y - x) \cdot \theta(x)| \leq \frac{2}{3}\alpha|y - x|,$$

see Figure 1, and so $y \in X(x, \theta(x)^\perp, \frac{2}{3}\alpha)$. (Here we use the notation $\theta(x)^\perp$ for the orthogonal complement of the line spanned by $\theta(x)$.) Combining this with the fact that $\theta(x)^\perp \subset X(0, \tilde{\theta}^\perp, \frac{\alpha}{3})$ implies that $y \in X(x, \tilde{\theta}^\perp, \alpha)$, and hence $\theta^{-1}(B)$ is $(n-1, \alpha)$ -planar. Covering S^{n-1} with $M = M(n, \alpha)$ balls of radius $\frac{\alpha}{3}$ and taking their preimages under θ gives the claim. \square

The next lemma is used to give a quantitative estimate of how much one needs to translate a tilted half-space such that it will not intersect a given neighbourhood of a planar set provided that the untilted half-space does not meet the neighbourhood.

Lemma 2.3. *Letting $0 < c < 1$, $0 < \alpha < \sin(\frac{\pi}{2} - \arccos c)$, and $V \in G(n, m)$, suppose that $P \subset \mathbb{R}^n$ is (V, α) -planar. If $0 < \delta \leq \beta$, $x \in P(\beta)$, $\theta \in S^{n-1}$ with $|\text{proj}_V(\theta)| \geq c$, and $\theta' = \text{proj}_V(\theta)/|\text{proj}_V(\theta)|$, then*

$$H(x + c'\beta\theta', \theta') \cap P(\beta) \subset H(x + \delta\theta, \theta),$$

where $c' = c'(\alpha, c) = \frac{2(\sin(\arccos c + \arcsin \alpha))^{-1} + 1}{\sin(\frac{\pi}{2} - \arccos c - \arcsin \alpha)}$.

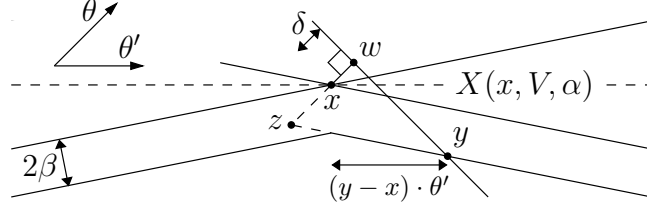


Figure 2. Illustration for the proof of Lemma 2.3

Proof. We assume that $|\text{proj}_V(\theta)| = c$. In the case $|\text{proj}_V(\theta)| > c$ one may use a similar argument and show that the number c' can be replaced by a smaller one. First observe that $P(\beta) \subset X(x, V, \alpha)(2\beta)$. Let

$$A = X(x, V, \alpha)(2\beta) \setminus H(x + \delta\theta, \theta),$$

$$w = x + \delta\theta, \text{ and}$$

$$z = x - \frac{2\beta\theta}{\sin(\arccos c + \arcsin \alpha)},$$

and take $y \in A$ which maximises $(y - x) \cdot \theta'$, see Figure 2. Now the angle $\angle wyz$ is $\frac{\pi}{2} - \arccos c - \arcsin \alpha$ and since

$$|z - w| \leq \left(\frac{2}{\sin(\arccos c + \arcsin \alpha)} + 1 \right) \beta,$$

we may estimate

$$|(y - x) \cdot \theta'| \leq |y - z| = \frac{|z - w|}{\sin(\frac{\pi}{2} - \arccos c - \arcsin \alpha)} \leq c'\beta.$$

□

The following remark will be useful when proving Theorem 2.5.

Remark 2.4. Let $A \subset \mathbb{R}^n$, $0 < \alpha < 1$, and $V \in G(n, m)$. Then A is (V, α) -planar if and only if there is a Lipschitz mapping $f: \text{proj}_V(A) \rightarrow V^\perp$ (we identify \mathbb{R}^n with the direct sum $V + V^\perp$) with Lipschitz constant $\alpha/\sqrt{1 - \alpha^2}$ such that A is the graph of f . It follows now from the Kirszbraun's theorem, see [3, §2.10.43], that A can be extended, that is, there is a (V, α) -planar set $A' \subset \mathbb{R}^n$ such that $A \subset A'$ and $\text{proj}_V(A') = V$.

Now we are ready to verify our main result concerning the upper Minkowski dimension of sets which are uniformly k -porous with respect to the scale r .

Theorem 2.5. *Let $0 < \varrho < \frac{1}{2}$ and $r_0 > 0$. Assuming that $A \subset \mathbb{R}^n$ is a bounded set with $\text{por}_k(A, x, r) > \varrho$ for every $x \in A$ and $0 < r < r_0$, we have*

$$\dim_M(A) \leq n - k + \frac{c}{\log \frac{1}{1-2\varrho}},$$

where $c = c(n, k)$ is a constant depending only on n and k .

Proof. The idea of the proof is as follows: Assuming that all the points in $A \cap B(x, r)$ are porous and using Lemma 2.1, one finds half-spaces which do not meet $A \cap B(x, r)$. After removing these, one is left with a convex set $C \subset B(x, r)$ such that all the points in $A \cap B(x, r)$ are close to the boundary of C and the distance is proportional to $r\sqrt{\frac{1}{2} - \varrho}$. This implies the claim in the case $k = 1$. For $k \geq 2$, we divide the boundary ∂C into planar subsets P_i and repeat the above process for the projections of each of the sets P_i into \mathbb{R}^{n-1} . As the result we see that $A \cap B(x, r)$ is close to a $(n-2)$ -dimensional set. This procedure may be repeated k times since there are k orthogonal directions with holes.

Since it is enough to prove the claim for sufficiently large ϱ , we may assume that

$$\log \frac{1}{4\sqrt{1-2\varrho}} > \frac{1}{3} \log \frac{1}{1-2\varrho}. \quad (2.5)$$

Let $0 < \alpha < \sin(\frac{\pi}{2} - \arccos \frac{1}{\sqrt{k}})$, and let $t = t(\varrho)$ and $\delta = \delta(\varrho)$ be as in (2.1) and (2.2), respectively. For any positive integer m with $n - k \leq m \leq n - 1$, define $\alpha_m = 2^{\frac{1}{2}(n-k-m+1)}\alpha$. Moreover, letting $c_1 = c'(\alpha, \frac{1}{\sqrt{k}})$ be the constant of Lemma 2.3, set $c_2 = 1 + (c_1 + 1)/\sqrt{1 - \alpha^2}$.

Fix $x \in A$ and $0 < r < \frac{r_0}{2t}$. Taking any $y \in A \cap B(x, r)$, let $\theta(y) \in S^{n-1}$ be one of the vectors $\theta_1, \dots, \theta_k \in S^{n-1}$ given by Lemma 2.1. Define

$$C = \bigcap_{y \in A \cap B(x, r)} \mathbb{R}^n \setminus H(y + 2\delta r \theta(y), \theta(y)).$$

(Here we could replace \mathbb{R}^n with $B(x, r)$. However, our choice makes the inductive step somewhat simpler.) Then C is non-empty and convex, and furthermore by (2.4), $A \cap B(x, r) \subset (\partial C)(2\delta r)$. Using Lemma 2.2, we obtain

$$\partial C = \bigcup_{i=1}^{M(n, \alpha_{n-1})} P_{n-1, i},$$

where the constant $M(n, \alpha_{n-1})$ depends only on n and α_{n-1} , and each $P_{n-1, i}$ is $(n-1, \alpha_{n-1})$ -planar. This, in turn, gives that

$$A \cap B(x, r) \subset \bigcup_{i=1}^{M(n, \alpha_{n-1})} P_{n-1, i}(2\delta r).$$

If $k \geq 2$, then we continue inductively: Let $n - k < m \leq n - 1$ and suppose that we are given (m, α_m) -planar sets $P_{m, 1}, \dots, P_{m, l_m}$, where

$$l_m = M(n, \alpha_{n-1}) \prod_{j=m+1}^{n-1} M(j, \alpha_j),$$

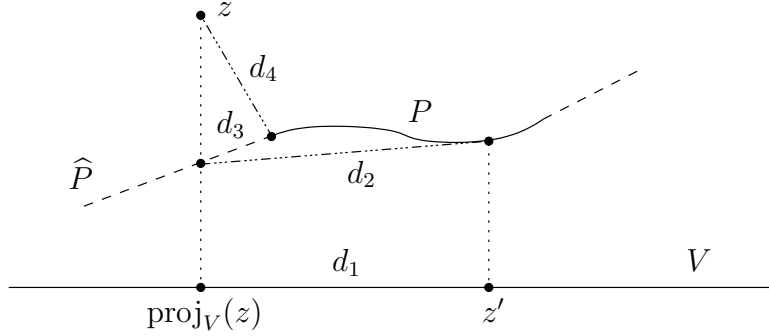


Figure 3. A 2-dimensional illustration for the proof of Theorem 2.5: How much one needs to enlarge the neighbourhood in the induction step? Here $z \in P(c_2^{n-m-1}2\delta r)$, $z' \in P'_j(c_1c_2^{n-m-1}2\delta r)$, and $\beta = c_2^{n-m-1}2\delta r$. Further, $d_1 \leq c_1\beta$, $d_2 \leq c_1\beta/\sqrt{1-\alpha^2}$, $d_3 \leq \beta/\sqrt{1-\alpha^2}$, and $d_4 \leq \beta$.

such that

$$A \cap B(x, r) \subset \bigcup_{i=1}^{l_m} P_{m,i}(c_2^{n-m-1}2\delta r).$$

Consider a positive integer i with $1 \leq i \leq l_m$. Abbreviating $P = P_{m,i}$, let $V \in G(n, m)$ be such that P is (V, α_m) -planar. For every $y \in A \cap B(x, r) \cap P(c_2^{n-m-1}2\delta r)$, choose orthogonal vectors $\theta_1, \dots, \theta_k \in S^{n-1}$ as in Lemma 2.1. Since $m > n - k$, there is $\theta \in \{\theta_1, \dots, \theta_k\}$ for which $|\text{proj}_V(\theta)| \geq \frac{1}{\sqrt{k}}$. Setting $\theta'(y) = \text{proj}_V(\theta)/|\text{proj}_V(\theta)|$, define

$$C' = \bigcap_{y \in A \cap B(x, r) \cap P(c_2^{n-m-1}2\delta r)} V \setminus H(\text{proj}_V(y) + c_1c_2^{n-m-1}2\delta r\theta'(y), \theta'(y)).$$

It follows from Lemmas 2.1 and 2.3 that

$$\text{proj}_V(A \cap B(x, r) \cap P(c_2^{n-m-1}2\delta r)) \subset (\partial C')(c_1c_2^{n-m-1}2\delta r).$$

Moreover, $C' \subset V$ is convex, and by Lemma 2.2, its boundary $\partial C'$ can be decomposed into $M(m, \alpha_m)$ parts P'_j all of which are $(m-1, \alpha_m)$ -planar. Using Remark 2.4, we find a (V, α_m) -planar set \hat{P} such that $P \subset \hat{P}$ and $\text{proj}_V(\hat{P}) = V$. The rôle of \hat{P} is to guarantee that $\hat{P} \cap \text{proj}_V^{-1}(P'_j) \neq \emptyset$ for all j . For all $j \in \{1, \dots, M(m, \alpha_m)\}$ the sets $\tilde{P}_j = \hat{P} \cap \text{proj}_V^{-1}(P'_j)$ are $(m-1, \alpha_{m-1})$ -planar, and moreover,

$$A \cap B(x, r) \cap P(c_2^{n-m-1}2\delta r) \subset \bigcup_{j=1}^{M(m, \alpha_m)} \tilde{P}_j(c_2^{n-m}2\delta r),$$

see Figure 3. As the result of this inductive process we may find $(n - k, \alpha_{n-k})$ -planar sets $P_{n-k,1}, \dots, P_{n-k,l_{n-k}}$, where $l_{n-k} = M(n, \alpha_{n-1}) \prod_{j=n-k+1}^{n-1} M(j, \alpha_j)$, such that

$$A \cap B(x, r) \subset \bigcup_{i=1}^{l_{n-k}} P_{n-k,i}(c_2^{k-1} 2\delta r). \quad (2.6)$$

It is not hard to verify that there is a constant $C(\alpha, n, k)$ depending only on α , n , and k such that each of the sets $P_{n-k,i}(c_2^{k-1} 2\delta r) \cap B(x, r)$ can be covered with $C(\alpha, n, k)\delta^{k-n}$ balls of radius δr , and therefore by (2.6), $C(\alpha, n, k)l_{n-k}\delta^{k-n}$ such balls will cover the set $A \cap B(x, r)$. Iterating this and defining $c_0 = C(\alpha, n, k)l_{n-k}$ gives for all positive integers i that $N(A, \delta, i) \leq N_0(c_0\delta^{k-n})^{i-i_0}$, where i_0 is the smallest integer with $\delta^{i_0} < \frac{r_0}{2t}$ and N_0 is a positive integer such that $A \subset \bigcup_{j=1}^{N_0} A \cap B(x_j, \delta^{i_0})$ for some $x_j \in A$. Taking logarithms and using (2.3) and (2.5) gives

$$\begin{aligned} \dim_M(A) &\leq \limsup_{i \rightarrow \infty} \frac{\log(N_0(c_0\delta^{k-n})^{i-i_0})}{i \log \frac{1}{\delta}} = n - k + \frac{\log c_0}{\log \frac{1}{\delta}} \\ &\leq n - k + \frac{c}{\log \frac{1}{1-2\varrho}} \end{aligned}$$

where $c = 3 \log c_0$ is a constant depending only on n and k . \square

For the Hausdorff and packing dimensions we have the following immediate consequence:

Corollary 2.6. *Let $0 < \varrho < \frac{1}{2}$ and suppose that $A \subset \mathbb{R}^n$ with $\text{por}_k(A) > \varrho$. Then*

$$\dim_H(A) \leq \dim_P(A) \leq n - k + \frac{c}{\log \frac{1}{1-2\varrho}},$$

where c is the constant of Theorem 2.5.

Proof. Representing A as a countable union of sets satisfying the assumptions of Theorem 2.5 gives the claim. \square

Remark 2.7. The estimates of Theorem 2.5 and Corollary 2.6 are asymptotically sharp. In fact, for any $1 \leq k \leq n - 1$ there is a constant $c' = c'(n, k)$ with the following property: for all $0 < \varrho < \frac{1}{2}$ there exists $A_\varrho \subset \mathbb{R}^n$ with

$$\dim_H(A_\varrho) > n - k + \frac{c'}{\log \frac{1}{1-2\varrho}}$$

and $\text{por}_k(A_\varrho, x, r) > \varrho$ for all $x \in \mathbb{R}^n$ and $r > 0$. The sets $C_\lambda^k \times [0, 1]^{n-k}$ serve as natural examples. Here $C_\lambda \subset [0, 1]$ is the λ -Cantor set, see [9, §4.10]. When $k = 1$, the straightforward calculation can be found from Salli [12, Remark 3.8.2(1)].

REFERENCES

- [1] D. B. Beliaev and S. K. Smirnov. On dimension of porous measures. *Math. Ann.*, 323:123–141, 2002.
- [2] J.-P. Eckmann, E. Järvenpää, and M. Järvenpää. Porosities and dimensions of measures. *Nonlinearity*, 13:1–18, 2000.
- [3] H. Federer. *Geometric Measure Theory*. Springer-Verlag, Berlin, 1969.
- [4] E. Järvenpää and M. Järvenpää. Average homogeneity and dimensions of measures. to appear in *Math. Ann.*
- [5] E. Järvenpää and M. Järvenpää. Porous measures on \mathbb{R}^n : local structure and dimensional properties. *Proc. Amer. Math. Soc.*, 130:419–426, 2001.
- [6] A. Käenmäki and V. Suomala. Nonsymmetric conical upper density and k -porosity. preprint 299 <http://www.math.jyu.fi/research/papers.html>.
- [7] P. Koskela and S. Rohde. Hausdorff dimension and mean porosity. *Math. Ann.*, 309:593–609, 1997.
- [8] P. Mattila. Distribution of sets and measures along planes. *J. London Math. Soc. (2)*, 38:125–132, 1988.
- [9] P. Mattila. *Geometry of Sets and Measures in Euclidean Spaces: Fractals and rectifiability*. Cambridge University Press, Cambridge, 1995.
- [10] M. E. Mera and M. Morán. Attainable values for upper porosities of measures. *Real Anal. Exchange*, 26:101–115, 2000.
- [11] M. E. Mera, M. Morán, D. Preiss, and L. Zajíček. Porosity, σ -porosity and measures. *Nonlinearity*, 16:247–255, 2003.
- [12] A. Salli. On the Minkowski dimension of strongly porous fractal sets in \mathbb{R}^n . *Proc. London Math. Soc. (3)*, 62:353–372, 1991.

DEPARTMENT OF MATHEMATICS AND STATISTICS, P.O. Box 35 (MAD), FIN-40014
UNIVERSITY OF JYVÄSKYLÄ, FINLAND

E-mail address: esaj@maths.jyu.fi

E-mail address: amj@maths.jyu.fi

E-mail address: antakae@maths.jyu.fi

E-mail address: visuomal@maths.jyu.fi